



## James Kaklamanos

Attorney & Counselor at Law

Reasonably Priced Legal Services  
*Since 1981*

- ◆ Real Estate Law
  - Residential & Commercial
  - Buyer / Seller Representation
  - Purchase & Sales Agreements
  - Title Abstracts
  - Power of Attorney
- ◆ Incorporations & Partnerships
- ◆ Bankruptcy
- ◆ Small Business Start Ups
- ◆ Wills & Estate Planning

*Evening & Saturday Hours  
Convenient Onsite Parking*

**James Kaklamanos, P.C.**

P.O. Box 3396

374 Main Street

Nashua, NH 03061-3396

**(603) 595-0999**

**(603) 595-9899 (Fax)**

www.jk9.com / E-mail: [jk@jk9.com](mailto:jk@jk9.com)

Licensed to practice law in NH, MA, and DC

# Actorsingers

Golden Anniversary Season



## Jesus Christ Superstar

April 29, 30, May 1, 6, 7, 2005

music by

**ANDREW LLOYD WEBBER**

lyrics by

**TIM RICE**



JESUS CHRIST SUPERSTAR is presented through exclusive arrangement with The Rogers and Hammerstein Theatre Library,  
229 West 28th Street, 11th floor, New York, New York 10001 and the Really Useful Group Limited.

**THE SUPERSTAR OF  
AUTO ELECTRIC PARTS...**



**AUTO ELECTRIC  
WAREHOUSE, INC.**

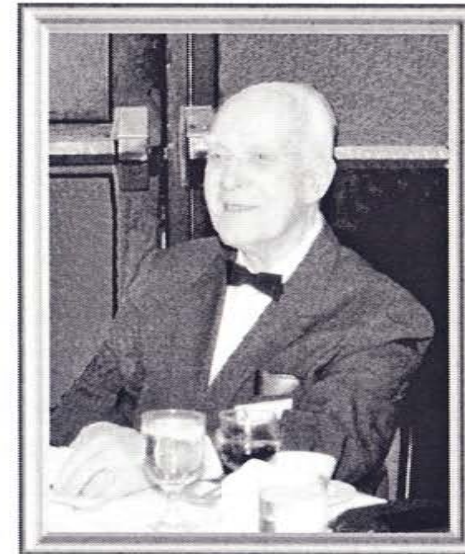
**CELEBRATING THE ARTS...  
ESPECIALLY THE ACTORSINGERS!**

**YOU MAKE A DIFFERENCE  
FOR ALL OF US!!!**

**Make a difference for your car... install a Starter or  
Alternator from Auto Electric Warehouse, Inc...  
It'll keep your whole car  
PERFORMING AT ITS BEST!**

**CALL 424-3820 and ask for Dana!**

*In Memory of  
Mr. Albin R. Tamulonis*



Albin R. Tamulonis honored at the Actorsingers 50th Gala

*Fifty years ago, a handful of dedicated individuals, interested in sharing their love of musical theatre, established the Nashua Actorsingers.*

*On March 10, 2005, Actorsingers lost our last charter member of the organization, past president, dedicated supporter, dear friend, Albin "Al" Tamulonis.*

*We are indebted to Al for his vision of bringing musical theatre to the Nashua audience, and we will always be grateful to him for opening the doors to so many artists eager to show their talents on stage or behind the scenes, in the orchestra, or directing. Thank you, Al.*

*Our condolences to his loving wife, Penny, and the entire Tamulonis family.*

# Congratulations Cast & Crew!!!

MA Home Inspector  
Lic. # 331

MA Construction  
Lic. # 037646



**J.R. BOVILL**  
*Building Inspections*

## **John R. Bovill**

HUD Approved Consultant/Inspector  
MA DEP Certified Title 5 System  
Inspector

6 Courthouse Ln., Suite 9  
Chelmsford, MA 01824  
Tel (978) 275-0048  
Fax (978) 275-9241

**WARM  
STONE  
STUDIO**

Making Happier People Through Clay

**Grand Opening  
Pottery Sale & Open Studio**

**June 1-5, 2005  
12:00 - 8:00 pm**

**Wine & Cheese Artist's Reception  
Thursday June 2nd from 5:00 - 8:00**

Warm Stone Studio, 99 Factory Street Extension, Nashua, NH  
603-595-9500 [www.warmstonestudio.com](http://www.warmstonestudio.com)

## **SCHWARTZ & SCHWARTZ**

Attorneys at Law  
Pamela Schwartz Bruckman, Esq.



*Specializing in:  
Estate Planning, Estate Administration, Medicaid  
Issues, and Elder Law*

369 Merrimack Street, Methuen, MA 01844  
(978) 683-6272-voice; (987) 685-7090-fax

# Hanson Automotive

Would like to congratulate the  
Cast and Crew of Jesus Christ Superstar  
On a great show! Break a leg!



For your auto repair

needs, visit us at ...

271 West Hollis Street

Nashua, New Hampshire 03060

**(603) 883-7029**



## Real Bodies Clothing from Bali

20 Middle St. Milford, NH 03055

Nancy White, owner-manager

A unique boutique which offers women of all sizes and shapes, flowing styles, gorgeous fabrics and accessories created by Real Bodies to enhance the feminine. Patterns and colors are influenced by Bali's natural beauty. We specialize in casual separates, cruise wear and special occasion styles. You receive personal attention to highlight your look.

**Hosanna, Kirsten!!!**

[www.realbodies.com](http://www.realbodies.com) T-Sat. 10:30-5:00 603-672-0271



### Silver Clippers

9 Broad St.

Nashua, NH

603-886-1974

Professional Dog Groomers

[www.silverclippers.com](http://www.silverclippers.com)

### Myoptic

Downtown Nashua



[www.myoptic.com](http://www.myoptic.com)

Bob Cagen

204 Main Street  
Nashua, NH 03060  
(603) 880-6700  
Fax: (603) 889-2168

*ENVISION YOURSELF*

# The Cast of Jesus Christ Superstar

**Judas Iscariot** — Kevin Roberge

**Jesus Christ** — Brian Waldron

**Mary Magdalene** — Jessica Scalese

**Caiaphas, High Priest** — Tim Judd

**Annas** — Mark Mirabella

**Simon Zealotes** — Jonathan Fisher

**Pontius Pilate** — Jeffrey Prescott

**Peter** — Steven Damboise

**King Herod** — David Cote

## **Priests**

Scott Hall

Ed Hinton

W. Nash Klardie

## **Apostles**

**Thomas** — Alan Amaral

**James Major** — Jeff Caron

**Thaddeus** — Bobby Fonacier

**James Minor** — Dan Merriman

**Andrew** — Dylan Gamblin

**Bartholomew** — Jim Maloney

**Philip** — Mike Rydèr

**John** — Robert Paige

**Matthew** — Tom Ritrovato

## **Ensemble**

Malennda Anderson

Laura Babb

Mike Bradbury

Amanda Davis

Tajoura Davis

Deborah Emmons

Kathleen Goreham

Sarah Houghton

Elizabeth Krahenbuhl

Brian Mehlman

Donna O'Bryant

Laura Patterson

Lanéa Ritrovato

Rachel Scott

Tracy Smith

Patrick Verhoff

Gail Ward

Faythe Webster

Kirsten White

## **Children in "Hosanna"**

Elizabeth Batchelder

Katrina Fisher

Mark Lawrence

Meghan O'Keefe

Jennifer Nicole Ryder

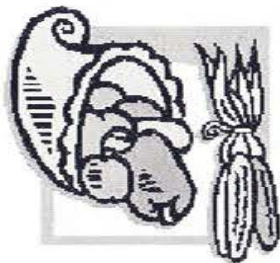
Hayleigh Scott

Vienna Scott

## **Orchestra**

Trent Austin – trumpet  
George Stevens – trumpet  
Bron Wright – trombone  
William Buonocore – guitar

Matt Comstock – drums  
John Stykluanis – bass  
Julie Oliver-Babb – keyboard  
Janet Roma – keyboard



## **Nashua Farmers Exchange**

"Sustaining responsible agriculture in our corner of the world"

38½ Bridge Street  
Nashua, NH 03060  
(603) 883-9531



Creative Dance and Yoga Classes  
Phoenix Rising Yoga Therapy  
Infants – Children – Teens – Adults

phone/fax: (603) 886-7308  
Harris Pond, 32 Daniel Webster Hwy  
Merrimack, NH 03054

[www.movingspiritryogadance.com](http://www.movingspiritryogadance.com)

Rosemary T. Clough, Director

---

---

**M<sub>K</sub> MartKel**

---

---

**DRYWALL, INC.**

We offer the unique combination of:

- ◆ Quality workmanship
- ◆ Reliable customer service
- ◆ Competitive prices

Complete drywall services for both residential and commercial:

- ◆ Drywall hanging and taping
- ◆ Sanding and prime
- ◆ Textured ceilings

**For a free quote, call  
Ed Kelley or Marc Martel at:  
603-641-1156**

724 East Industrial Park, Ste 15  
Manchester, NH 03102

## Meet the Cast



**Kevin Roberge (Judas Iscariot)** – This is Kevin's second show with Actorsingers. He played Joey Spinelli in *Boomers*, and finds it funny that, in both roles, he sings a big, flashy number after he dies. He has worked at many local and regional theatres, including the Palace, Seacoast Repertory, Prescott Park, Stage One Dinner Theatre, and North Shore Music Theatre, as well as many regional theatres across the country.

His NYC credits include Snork in the 20th anniversary production of *Elephant Man* (Off-Broadway), Claudio in *Much Ado about Nothing*, and as the emcee of Madison Square Garden's *Madison "SCARE" Garden*. He has also been seen on *Law & Order*, *SeaQuest*, dozens of MTV shows in the late 90s, and as Jett Dexter, the crazy DJ for Radio Disney in Orlando! His favorite roles include Scarecrow in *Wizard of OZ* (Palace), Danny Zuko in *Grease* (Seacoast Rep), Richard Henry Lee in *1776* (Celebration, FL), and most recently, Frank-n-Furter in *The Rocky Horror Picture Show* (Acting Loft).

Kevin has a wonderful 3-year-old son, Brayden, with another due in June (name TBD). He would like to thank his wife, Marisa, for all her support and occasional patience with his theatre bug.



**Brian Waldron (Jesus Christ)** – Brian has been interested in music since he performed in elementary school talent shows, and has been acting since high school. When he was 18, he dropped out of a voice program at Anna Maria College in Massachusetts, but has always dreamed of returning to music and becoming a professional singer, songwriter, and actor.

In the summer of 2004, Brian was one of 12 finalists in the New Hampshire Idol contest held at the Meadowbrook Musical Arts Center, in Gilford. His acting credits include appearances in the Community Players of Concord productions of *Damn Yankees* and *Carousel*. And earlier this year, he was named the NH Theater Awards 2004 Best Actor in a Community Theater Musical for his role as the Kit Kat Club's Emcee in the Music and Drama Company's production of *Cabaret*.

Brian lives in Concord with his wife Sheri and his two children, Robyn and Christian. By day, he is a hair stylist with Claudia's Signature Salon, in Concord. His role as Jesus marks his debut appearance on the Actorsingers stage.



**Jessica Scalese (Mary Magdalene)** – Jessica is pleased to perform in her first show with the Actorsingers and feels blessed to work with such an amazing cast. She has performed in various theatres/venues throughout Massachusetts, including Symphony Hall and the Tsongas Arena.

Her favorite roles include Eliza in *My Fair Lady*, Maria in *West Side Story*, Laurie in *Oklahoma*, and Mina in *Dracula*. Her dance credits include choreography for several productions, such as four local theatre companies, two high schools, and Harvard University. Jessica is also an award-winning Lindy-hop swing dancer. When not involved with performing arts, Jessica works at BK Medical in Wilmington, MA, in the service department. She is also a DJ for Curtis Knight Entertainment.

(Continued on page 13)

David A. Keele  
& Associates  
Attorneys At Law

Telephone (978) 244-2400  
Facsimile (978) 244-1111



David A. Keele, Esquire  
9 Billerica Road  
Chelmsford, MA 01824

(Continued from page 11)



**Alan Amaral (Apostle/Thomas)** – *JCS* is Alan's first play, but he's right at home on stage. He's been singing and playing in rock bands most of his life, and is currently lead singer and rhythm guitarist for the local band "Flashback." Alan thanks the cast and crew of *JCS* for making his first show such a wonderful experience. He also gives a special thanks to his friends and family and particularly to Barb, whose love and support made it all possible.



**Malenna Anderson (Ensemble)** – This is Malenna's first year with Actor-singers. She has learned so much in such a short amount of time and has had the chance to meet many wonderful people. She says thanks to all those who have supported her desire to sing and dance, and she sends a big shout-out to Dad and Lore, who drove all the way from Ohio.



**Laura Babb (Ensemble)** – Laura is happy to be onstage again with Actorsingers. She was most recently seen in Palace Professional's *A Christmas Carol* as Martha. She has many other NH credits with Palace Professional, Palace Youth, Peacock Players, MAD Co, Junior A/S, and Opera NH. She thanks Julie, Daddy, and Hu, all of her friends, and most of all, the love of her life, Geoffrey, for all of their support. I couldn't do it all without you guys!



**Mike Bradbury (Ensemble)** – A "recovering engineer," Mike is honored to be part of *Jesus Christ Superstar*. Prior Actorsinger shows include *Titanic* (Colonel JJ Astor), *Brigadoon* (Archie Beaton), *Ragtime* (Admiral Peary), and *Man of La Mancha* (Captain of the Inquisition). He was also Doc in *West Side Story* and a pirate in *The Pirates of Penzance* with another NH-based group. Mike thanks Maria, Lauren, and Colin for all their support.



**Jeff Caron (Apostle/James Major)** – Jeff is thrilled to be back on the Actorsingers stage. He was last seen a few summers ago as Eugene in *Grease*. He has also directed the A/S production of *Two by Two* and the Junior A/S production of *Narnia*. In his spare time, he teaches science at Merrimack Middle School.

(Continued on page 15)



MARY KAY®

Monica Dove  
Independent Beauty Consultant

4 Deacon Drive  
Nashua, NH 03063  
(603) 882-1377  
www.marykay.com/mdove  
e-mail: mdove@marykay.com

# Have a Great Show!

**CHARLES PIPILAS, D.D.S**  
General Dentistry



280 Main Street, Suite 311  
Nashua, NH 03060-2930

(603) 881-8280



**Learn to Sing!**

**CAREY & HENDERSON**  
VOCAL STUDIOS

14 COURT ST., NASHUA, NH      6 WOODCREST DR., HUDSON, NH  
(603) 889-6580                      (603) 577-9863

*Creating Successful Performers Since 1948*

~ GRAND OPERA AND CLASSICAL CONCERT ~  
~ MUSICAL THEATER AND BROADWAY ~  
~ EXPERT REPAIR OF DAMAGED VOICES ~  
~ RESPONSIBLE AND THOUGHTFUL TRAINING OF YOUTH ~  
for Chorus, Children's Theater, Competitions, Auditions

\*NATIONAL ASSOCIATION OF TEACHERS OF SINGING \* OPERA AMERICA \* THE VOICE FOUNDATION \*  
OPERA NEW HAMPSHIRE \* NEW ENGLAND ACADEMY FOR MUSIC AND DRAMA

(Continued from page 13)



**David Cote (King Herod)** – David's numerous onstage credits include Actor-singers productions of *Brigadoon*, *Ragtime*, and *Boomers*, Junior A/S's *West Side Story* (Lt. Shrank), the Majestic's *Hello Dolly*, the Palace Professional Theatre/NH Opera's *The Pirates of Penzance*, and the Palace's *West Side Story* (Lt. Shrank). Most recently, he played Mr. Bratt in the A/S production of *How to Succeed in Business*. Thanks to Austin and Rhys for singing with me!



**Steve Damboise (Peter)** – Steve was last seen onstage as Cliff in MADCO's production of *Cabaret*. Other roles include Cain in *Children of Eden* and the Dentist in *Little Shop of Horrors*. He received the 2003 NHTA Best Supporting Actor award for his portrayal of Amos in *Chicago*. Steve is the music director at St. Patrick's church and is also a real estate investor in southern NH. Steve dedicates this performance to his loving wife, Debbie. Go Team Damboise!



**Tajoura (TJ) Davis (Ensemble)** – Hailing from Stamford, CT, TJ attended the Rippowam Cluster Program, where she focused her high school electives in the performing arts. Her NH theater credits include Jan in *Grease* (Music And Drama Company), Wanda/Walter in *Inspecting Carol* (Milford Area Players), Clemma in *Proposals* (New Thalian Players), and Grumio in *Taming of the Shrew* (NTG). This is her 4th appearance on the A/S stage. Love to All!



**Amanda Davis (Ensemble)** – Amanda studied dance at the Rosita Lee Music Center in Hudson, NH, for 11 years and voice for 6 years. As a member of the Rosita Lee Showstoppers (as an accordionist and a vocalist), she has traveled and performed in Ireland, Canada, California, Florida, and Michigan. She played one of Reno's angels in her senior class play, *Anything Goes*. Music is a huge part of her life, and she is happy to be a part of the JCS ensemble.



**Debbie Emmons (Ensemble)** – This is Debbie's first show with Actorsingers, but her third time in JCS. Some past roles include the Witch in *Into the Woods*, Applegate in *Damn Yankees*, and Woman II in *Songs for a New World*. A special thanks and a big hug go out to Jeff, Tam, Kristina, Shawna, Kristen, Justin, Mary, and the whole gang. And to the greatest parents a girl could ever ask for. I love you guys!



**Jonathan Fisher (Simon Zealotes)** – Jon was most recently seen as Willie Conklin in the Actorsingers award-winning production of *Ragtime*. Past roles include Lightholler in *Titanic*, Phra Alack in *The King and I*, and Prince DeLong in *The Unsinkable Molly Brown*. When not onstage, Jon enjoys helping backstage with makeup and special effects. Jon dedicates his performance to his own Superstars – Cindy and Katrina. I love you girls up to the sky!

(Continued on page 17)



# Handling All Your Real Estate Needs



## Frank M. DiMaria Attorney-At-Law

150 Westford Road, Suite 27  
Tyngsboro, MA, 01879  
Email: [frank@frankdimaria.com](mailto:frank@frankdimaria.com)

Tel. (978) 649-4699  
(800) 349-7932  
Fax (978) 649-6315

(Continued from page 15)



**Bobby Fonacier (Apostle/Thaddeus)** – Bobby's last appearance in an Adult Actorsingers' production was as Paul in *A Chorus Line* (2001). He directed the first Teen A/S production, *West Side Story*, as well as *Sound of Music* for the Adult A/S. He also choreographed *Best Little Whorehouse in Texas*, *Crazy For You*, *Damn Yankees*, and *Narnia*. By day, he is a software manager, and is currently writing his first novel – part one of the *The Mosaic Passages*. Enjoy!



**Dylan Gamblin (Apostle/Andrew)** – This is Dylan's first show with Actorsingers. Prior to *Jesus Christ Superstar*, he was solely a Shakespearean actor. His favorite roles have been Calaban in *The Tempest*, Lucentio in *Taming of the Shrew*, and the title role in *Hamlet*.



**Kathleen Goreham (Ensemble)** – Kathleen has been a member of Actorsingers since 1992 and has worked both onstage and behind the scenes. Some favorite rolls include Cinderella (*Into the Woods*), Irene Roth (*Crazy for You*) and Maria (*Sound of Music*). Kathleen is excited to be back on the boards again after having a baby boy last year, and she thanks her husband Joe for putting up with the usual domestic craziness that occurs during a show!



**Scott Hall (Priest)** – Scott has been involved in several previous Actorsingers shows, including *Brigadoon*, *Camelot*, *On the Town*, and *Fiddler on the Roof*. He has enjoyed working with this fabulous cast and crew, and dedicates his performance to his lovely bride, Claire. Thank you for all your love and support.



**Ed Hinton (Priest)** – Ed has performed or worked backstage in over 100 productions over the past 33 years. Most recently he directed *Anything Goes* for the Majestic Theatre. Ed's one previous appearance for Actorsingers was in *Saints of 17th Street* at the Merrimack Rep in Lowell, in 1987. Ed dedicates his performance in *JCS* to his two daughters Mary and Emily and to his former stepdaughter Becky, her husband Frank, their son Elijah, and their new baby.

(Continued on page 19)

### LYNN McCARTNEY Voice Studio



(603) 886-4372  
31 Ritter Street  
Nashua, NH 03060  
Faculty: Community Music  
School and Rivier College



**889-3111**

**FREE DELIVERY!**

3 Mile Radius - Min \$10 Order  
495 Amherst St, Nashua, NH 03063

M-W: 10am - 10pm ☆ Th-S: 10am - 11pm  
Sun: 11am - 10pm

# Joe Lombardo

Production Manager



Imagine. Achieve.

## New York Mortgage

One Pleasure Island Road  
Wakefield, MA 01880

Office: 978-245-7736

Toll free: 888-993-5111

Fax: 781-245-7886

Email: [jlombardo@nymc.com](mailto:jlombardo@nymc.com)

(Continued from page 17)



**Sarah Houghton (Ensemble)** – Sarah is an active musician and performer. She most recently was in the world premiere of the opera *Abinadi*, performed at Brigham Young University. She thanks her family for their incredible support.



**Tim Judd (Caiaphas)** – Tim is a Londoner by birth. He first saw *Superstar* on the London stage in the early 70s and has been "off book" since he was 15. This is his second time around as Caiaphas, having played the role last year at the Derry Opera House. He is chorus manager of the Nashua Granite Statesmen, a male barbershop *a capella* chorus. This is his first time performing with Actiorsingers, and he's, generally speaking, reasonably happy to be here.



**Nash Klardie (Priest)** – Nash's stage credits include appearances as Earthquake McGoon in *Lil' Abner* and The Boss in *The Nerd* (both for New Thalien Players), Jack in *Everything I Know I Learned from the Funny Pages* (The Player's Ring), a Tap Dancing Mobster in *Sugar* (Goffstown High), a backup vocalist in *The Wall* (KJ Butler Enterprises), and assorted secondary roles in *Little Shop of Horrors* (UNH Theatre).



**Elizabeth Krahenbuhl (Ensemble)** – This is Lizzie's first show with the Actiorsingers, and she is thrilled to be a part of such a fabulous and talented group. She recently appeared in *Anything Goes* with the Majestic Theater in Manchester. Lizzie is an avid cyclist and enjoys everything to do outdoors. She lives in Nashua with her husband Frank, daughter Kirsten (The Great), and sons Teddy and Erik.



**Jim Maloney (Apostle/Bartholomew)** – Jim is honored to play St. Bartholomew, the patron saint of Armenia. He's appeared in several Actiorsingers productions, including *Man of La Mancha* (Dr. Carrasco), *How To Succeed in Business* (the Book Voice), and *Ragtime* (the Man of Many Costume Changes). In 2004, Jim was nominated for Best Actor in a Musical for his favorite role as Emile DeBeque in Windham Performing Arts' *South Pacific*.

(Continued on page 21)

To Lizzy,

My  
**SUPERSTAR!!!**

Congratulations! Love, Mom



Landmark



Richard D. Glynn  
Realtor®



One Chelmsford Street  
Chelmsford, Massachusetts 01824  
Business (978) 256-6575  
Toll Free (800) 521-2099  
Voice Mail / Pager (978) 250 x166  
Fax (978) 256-5060  
E-Mail rglynn@c21email.com

Each office is independently owned and operated

**Serving all of New Hampshire and  
Massachusetts**

2003 National Quality Service Award Recipient

2001 C21 Landmark Rookie Agent of the Year

Actorsingers Board Member and  
frequent member of cast and crew

Co-Producer of *Jesus Christ Superstar*

(Continued from page 19)



**Brian Mehlman (Ensemble)** – Brian enjoys working in community theatre, both onstage and behind the scenes. He has been onstage in *Fiddler on the Roof* (Colonial Chorus), *Follies*, *In the Spotlight*, *Brigadoon*, and now *Jesus Christ Superstar*. Behind the scenes, he's worn many hats since joining Actorsingers in 1994.



**Dan Merriman (Apostle/James Minor)** – Dan was a NH Theatre Awards finalist for his performance as Bud Frump in the A/S production of *How to Succeed in Business* and for his roles in NTG's *Shakespeare*. He has also worked with Main Stage Musical, Peacock Players, Young Company, American Stage Festival, and The Acting Loft. *JCS* is his fifth A/S production. He thanks God, his family, friends, and Amanda for their love, and support.



**Mark Mirabella (Annas)** – Mark works as an environmental scientist, but he identifies himself as a musician, songwriter, recording artist, and actor. He studied acting in LA and NJ, and has trained in voice, modern dance, and tap. Over a 30+-year career, he has fronted many NY and NJ rock bands. His theater credits include performances in *JCS*, *West Side Story*, *Lippi - The Smiling Madonna*, *Anything Goes*, *Arsenic and Old Lace*, and many others.



**Donna O'Bryant (Ensemble)** – Donna is a Life Member of Actorsingers and currently serves on the A/S board. She recently choreographed the 2004 NH Theatre Award winning production of *Cabaret*. She has appeared in several A/S shows, including *Anything Goes*, *42nd Street*, and *Grease*. Donna thanks her family for their support and thanks show director (and fiance), Paul, for his talent, vision and hard work to make this production a success!



**Robert Paige (Apostle/John)** – This is Bob's first theatre role of any kind. After moving more than twenty times in his life and having lived all over the country, Bob now lives in Hudson, NH, with his first (and only) wife and his four children.

(Continued on page 25)



**Stage Door  
Hair & Nail Salon Inc.**

*"Where We Make You Feel Like A Star"*

HAIR, NAILS, SKIN CARE & TANNING

137 Main Street, Nashua, NH

(603) 889-8738

# Scene List and Musical Numbers

## ACT I

Scene 1	<b>Urban Exterior, Friday morning</b> <i>Heaven On Their Minds</i> ..... Judas
Scene 2	<b>Mary's Apartment Interior, Friday night</b> <i>What's The Buzz</i> ..... Apostles, Jesus, Mary Magdalene <i>Strange Thing, Mystifying</i> ..... Judas, Jesus <i>Everything's Alright</i> ..... Mary Magdalene, Judas, Jesus, Ensemble
Scene 3	<b>Caiaphas' Study, Sunday daytime</b> <i>This Jesus Must Die</i> ..... Caiaphas, Annas, Priests <b>Urban Exterior, Sunday daytime</b> <i>Hosanna</i> ..... Caiaphas, Jesus, Ensemble <i>Simon Zealotes</i> ..... Simon Zealotes, Ensemble <i>Poor Jerusalem</i> ..... Jesus
Scene 4	<b>Pilate's Bedroom, very early Monday morning</b> <i>Pilate's Dream</i> ..... Pilate
Scene 5	<b>Temple Interior, Monday night</b> <i>The Temple</i> ..... Jesus, Ensemble <i>Everything's Alright (reprise)</i> ..... Mary Magdalene, Jesus <i>I Don't Know How To Love Him</i> ..... Mary Magdalene
Scene 6	<b>Caiaphas' Study, Tuesday</b> <i>Damned For All Time/Blood Money</i> ..... Judas, Annas, Caiaphas

## ACT II

Scene 1	<b>Peter's Apartment, Thursday evening</b> <i>The Last Supper</i> ..... Apostles, Jesus, Judas
Scene 2	<b>Garden of Gethsemane, Thursday night</b> <i>Gethsemane</i> ..... Jesus <b>Garden of Gethsemane/Caiaphas' Study, Thursday night</b> <i>The Arrest</i> ..... Peter, Apostles, Jesus, Caiaphas, Annas, Ensemble
	<b>Urban Exterior, Thursday night</b> <i>Peter's Denial</i> ..... Peter, Mary Magdalene, Ensemble Soloists
Scene 3	<b>Pilate's Mansion Interior, early Friday morning</b> <i>Pilate &amp; Christ</i> ..... Pilate, Jesus
Scene 4	<b>Herod's Mansion Interior, later Friday morning</b> <i>King Herod's Song</i> ..... Herod, Ensemble
Scene 5	<b>Urban Exterior, later Friday morning</b> <i>Could We Start Again, Please</i> ..... Mary Magdalene, Peter
Scene 6	<b>Caiaphas' Study, Friday noon</b> <i>Judas' Death</i> ..... Judas, Annas, Caiaphas
Scene 7	<b>Pilate's Courtyard, Friday afternoon</b> <i>Trial By Pilate / 39 Lashes</i> ..... Pilate, Caiaphas, Jesus, Ensemble <i>Superstar</i> ..... Judas, Ensemble <i>Crucifixion</i> ..... Jesus
	<b>Tomb, Friday night</b> <i>John 19:41</i> ..... Orchestra

## Notes from the Director

Our production of *Jesus Christ Superstar* sets the timeless story of the last seven days in the life of Jesus of Nazareth in the present day. By placing the production in contemporary times, we hope to have you, our audience, personally relate to the story, the characters, and the choices they make.

One of the primary themes in this show is that of "choice" – how every human being eventually confronts difficult choices in their life. Judas is faced with the choice of whether to

betray Jesus or not. Mary is faced with the choice of whether she'll open up emotionally and let herself love a man . . . for the first time in her life. Pilate has to deal with the choice of whether to concede to the mob and crucify Jesus, who he knows has done no wrong. Jesus faces many choices, not the least of which is whether to continue the path to his ultimate sacrifice.

Our production not only deals with the issue of making choices, but the consequences

of them. This is highlighted by the songs "Peter's Denial" and "Judas' Death." Peter confronts the fact that three times he denied knowing Jesus. In "Judas' Death," Judas expresses his remorse for betraying Jesus, leading to his eventual inability to deal with those consequences, resulting in his suicide.

If Jesus had come today instead of 2000 years ago, how would he be received? Would he be seen as a Messiah, or a mere cult leader looking for 15 minutes of fame? Would you

believe in his message? If so, would you quit your job, sell all your belongings, and leave your family to follow him? When Jesus is arrested and faced with execution, would you stand firm by those beliefs or would you too deny him, as Peter did? These are the questions we pose with our production of *Jesus Christ Superstar*.

Enjoy the show!  
Paul Metzger

## Company Coming? Invite **The Home Chef**

*"A passion for cooking is what I have...  
Sharing that passion is what I love to do!"*



- \* Catering for small parties at your location.
- \* Custom designed menu's to your needs.
- \* Sample tastings available.
- \* Ask about cooking demo's w/ wine.
- \* References available upon request.

**10% Off  
First Party**

With this Ad  
\*Not valid with  
any other offer\*  
Exp. 12/31/05

Call Sarah Vasques  
(603) 672 - 8130

## Michael Ryder Studios



See the lobby and  
program for samples  
of our work...

Expert photography at reasonable prices. With each engagement, striving to delight customers by delivering service, value and quality above what's expected. Come to our studio, or we'll come to you. Detail touch up available to insure your images are the best.

- **Portraits**
- **Events**
- **Parties**
- **Headshots**
- **Families**
- **Theater**
- **Schools**
- **Yearbooks**
- **Children**
- **and more**

(603) 305-1585 (603) 472-7252 [mike\\_ryder@comcast.net](mailto:mike_ryder@comcast.net)

(Continued from page 21)



**Laura Patterson (Ensemble)** – Although Laura is the granddaughter of former Actorsingers president, Edgar Simoneau, this is her first show with A/S. She graduated from Keene State College in 2003 with a dual major in education and theatre. She teaches fifth and sixth grade English at St. Christopher School in Nashua. She thanks Paul, Martha, Julie, and the entire cast for a fantastic experience!



**Jeffrey Prescott (Pilate)** – Jeffrey has been involved in New England theatre for the last 20 years, but this is his first show with Actorsingers. Past roles include Billy Crocker in *Anything Goes*, Cain/Japheth in *Children of Eden*, Edward Rutledge in *1776*, Percival Blakeney in *The Scarlet Pimpernel*, Billy Flynn in *Chicago*, and Cliff Bradshaw in *Cabaret*. He thanks his friends and family and especially Debbie for their love and support.



**Tom Ritrovato (Apostle/Matthew)** – Tom normally toils behind the scenes, but this marks his fourth time on the Actorsingers main stage. His favorite roles — past, present, and future — are as husband to Deb and dad to Lanéa and Aaron. Love you all!



**Lanéa Ritrovato (Ensemble)** – Lanéa has been with the Actorsingers for five years and is happy to be performing in her second adult show. Special thanks go to her parents for their support and love. She also thanks her brother, without whom she would be a different person.



**Michael Ryder (Apostle/Philip)** – This is Mike's third year with Actorsingers, and in that time, he's been involved with nearly every A/S show. Most recently, he co-produced *Wonderland* and *Man of La Mancha*. His favorite roles include *Boomers*, *Brigadoon*, *The Wiz*, and now *JC Superstar*. Mike is also an avid photographer and creates many of the photos for A/S shows. He also serves as a member of the A/S board. Happy Birthday Actorsingers!

(Continued on page 27)

THE NEW HAMPSHIRE GAY MEN'S CHORUS PRESENTS:

**Let Us Entertain You...**

**With A Twist Of  
NC-17 \***

\*some material may not be appropriate for the younger audience\*

Friday, May 6th, 7:30 pm at the Unitarian Universalist Church in Manchester  
Saturday, May 7th, 7:30 pm at the Unitarian Universalist Church in Nashua  
Saturday, May 14th, 7:30 pm at the Christ Episcopal Church in Portsmouth  
Sunday, May 15th, 4:00 pm at the Unitarian Universalist Church in Manchester

For tickets or more information, visit [www.NHGMC.com](http://www.NHGMC.com) or call (603) 668-4509

**Actorsingers**  
50 Great Years!!!

I'd like to thank all the  
cast and crew of **Jesus Christ  
Superstar**. It has been a  
pleasure and a privilege  
working with you all.

**The Pat . . . aka Pat Verhoff**

*Congratulations*  
*Jesus Christ Superstar Cast & Crew*

**Frank's**  
**Custom Copper**

Bay Windows • Ice Belts  
Decorative

**603-889-0573**

(Continued from page 25)



**Rachel Scott (Ensemble)** – Rachel was seen last in the 1989 Actorsingers production of *Grease* (Pink Lady). She returned to performing this past fall as Hope Harcourt in *Anything Goes* (Majestic) and now in both JCS and as Winnie in *Annie Get Your Gun* (MSM Players). A special thanks to Martha & Jed for encouraging her to return to the theatre. Thank you to God, from whom all blessings flow, my loving husband, family, friends, and babysitters



**Tracy Smith (Ensemble)** – Tracy has been with Actorsingers since 1989! While she occasionally "plays" with other groups, she always looks forward to coming home! Favorite shows have included *A Chorus Line*, *Damn Yankees*, *They're Playing Our Song*, and *Boomers*. She can't believe the level of talent onstage in this production. This is the most amazing cast...kudos to everyone. She dedicates this show to her best friend, and soul mate, June.



**Patrick Verhoff (Ensemble)** – *Jesus Christ Superstar* is Patrick's third Actorsinger production, and his third performance in community theatre. He finds it a pleasure to work with so many gifted and talented people, who rival professional performers and still have regular jobs.



**Gail Ward (Ensemble)** – JCS is Gail's Actorsingers debut. Gail previously performed (long, long ago!) in Lowell High School variety shows and DeMolay minstrel shows. She is also a member of the LHS alumni chorus. She thanks A/S for this exciting opportunity. And special thanks to her loving partner, Joseph, for encouraging her to follow her dreams, and to Shawn and Emily, and Tim and Stacy for their love.



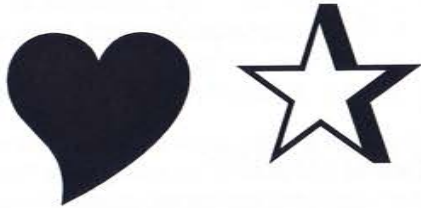
**Faythe Webster (Ensemble)** - Faythe's onstage credits include Patty in *You're a Good Man Charlie Brown* and a soloist in *A Tribute to Rodgers and Hammerstein* (both with Majestic). Also as Lady Rowena in *Once Upon a Mattress* and Ma Boudreaux in *Bayou* (both with West High School Theatre Knights). She is also a singer/songwriter and has performed at various Borders stores, as well as for the Manchester YWCA's *Take Back the Night*.



**Kirsten White (Ensemble)** – Kirsten is ecstatic to be joining Actorsingers for the first time! Her recent stage credits include *The Wizard of Oz* (The Acting Loft), the Star to Be in *Annie* and a nun in *Sound of Music* (both with Amherst PTA). A junior at Souhegan High School, she also attends the O'Shea-Chaplin Academy of Irish Dance, located in Boston. Kirsten thanks her family for their support, encouragement, and shared love of the stage.

# CONGRATULATIONS MOM

We Love You!  
You are our STAR



Love, Kirsten, Teddy, Erik, and Frank



- DRY ICE
- HELIUM
- JOKE GIFTS
- MASKS
- MAKE-UP
- PINATAS
- INVITATIONS
- SANTA SUITS
- YANKEE CANDLES
- GREETING CARDS
- CANDY MAKING SUPPLIES
- WILTON CAKE SUPPLIES
- COSTUME SALES
- BALLOONS
- CUSTOM PRINTING

**PARTY TIME**  
ONE STOP PARTY SHOP!  
251 West Hollis St.  
Nashua, NH 03060

Locally Owned & Operated  
**882-6454**



## AFTER THE CURTAIN, CALL: (603) 391-0504

As a sponsor of Jesus Christ Superstar, we understand that a successful show doesn't just happen up on the stage. Work begins long before the first performance. We'll put the same kind of sustained effort into helping you achieve your financial objectives. Because with careful planning and the help of talented people, you can reach your financial goals.

We'd like to help you feel more confident about your financial future – just give us a call.



5 Bedford Farms  
Third Floor  
Bedford, NH 03110  
(603) 668-1273, Ext: 504



American Express Financial Advisors Inc. Member NASD. American Express Company is separate from American Express Financial Advisors Inc. and is not a broker-dealer.

© 1998-2005 American Express Financial Corporation. All rights reserved.

# Meet the Directors



**Paul Metzger (Director)** – No stranger to the stage, Paul has appeared in 20 productions over the years, musical and non-musical alike, and has been Fight Director (stage combat) for several of them. Most recently, Paul appeared as one of the muleteers in *Man of La Mancha*, and prior to that, reprised the role of Ernst Ludwig ("the bad guy") in MADCO's award-winning production of *Cabaret*. Our production of *Jesus Christ Superstar*, however, marks Paul's main stage directorial debut.

He thanks Actorsingers for believing in his vision and taking a chance on a new director, and for everyone who helped make this dream a reality. Specifically, thanks to Martha Daniels Holland who was his unofficial Assistant Director on this project in addition to official Choreographer, and to Dennis Schneider, a great mentor on all things technical. Thanks to his brother-in-law Roger (who was also Paul's high school drama instructor) for planting the theatre bug years ago and for his advice and support. Kudos to everyone in the cast and crew . . . you couldn't ask for a more talented (and fun!) group of individuals.

But above all, thanks to his love and fiancée, Donna O'Bryant, for the never-ending support and endless patience she showed during months of preparation and countless playings of the soundtrack! And a super big hug to his biggest fans, his children Margaret and Matthew, and the other special woman in his life, Donna's daughter Mallory. You guys are the best!



**Julie Oliver-Babb (Musical Director)** – Julie is excited to return to Actorsingers after last season's *Boomers*. Since that show, Julie has musically directed *Pirates of Penzance*, *Crazy for You*, *Forever Plaid*, *Annie*, and *Christmas Carol* for Palace Professional Productions in Manchester. She also enjoyed working with Central High School of Manchester in *Fame* and with her own school, Nashua High School North, in *Zombie Prom*. Julie also performs as a soloist in the area, most recently being featured as Mary Magdalene in *Jesus in the City*.



**Martha Daniels Holland (Choreographer)** – Martha was absolutely thrilled to work on this show. This is her first opportunity to choreograph a show with hip-hop dancing. She wishes to thank: Val Psoinas for all her assistance; the cast, crew and many others who thought "outside the box" to get this show off the ground; and most of all, her family, who supported her throughout this and many past productions. A special thanks goes to her wonderfully talented husband, Jed, who played piano for several rehearsals and took care of their beautiful children, Andrew, Rebecca, Michael and Mary (who, by the way, all know the entire score to *JCS*). She dedicates this show to the memory of her friend Moe Coutu and to Al Tamulonis.

Learn More About Us At

**[www.Actorsingers.org](http://www.Actorsingers.org)**

# The Production Crew

Producers ..... Glen Grimard, Rich Glynn, Sue Koczarski,  
 ..... Val Levesque, John Lijeberg (mentor)  
 Director ..... Paul Metzger  
 Musical Director ..... Julie Oliver-Babb  
 Choreographer ..... Martha Daniels Holland  
 Stage Manager ..... Deb Ritrovato  
 Technical Directors ..... John McAllister, Mike O'Keefe  
 Lighting Design ..... Dennis Schneider  
 Sound Design ..... Mike O'Keefe  
 Set Design ..... John McAllister  
 Costumes ..... Sue Lewis (chair), Jessica Snow (apprentice),  
 ..... Lorraine Louie, Kevin Roberge,  
 ..... Martha Daniels Holland, Tracy Smith  
 Props ..... Barb Asketh (chair), Alan Amaral, Lauren Bradbury  
 Publicity ..... Kerry Schneider (chair), Rich Glynn, Dennis Schneider,  
 ..... Pat Verhoff, Glen Grimard  
 Dance Assistant ..... Valerie Psoinos  
 Tickets ..... Howie & Jackie Levine  
 Set Construction ..... John McAllister, Larry Dorian, Joe Reilly, Jeffrey McAllister  
 Scenic Artist ..... John McAllister  
 Set Painting ..... Glen Grimard, Martha Daniels Holland, Laura Paterson,  
 ..... Jessica Snow, John McAllister, Joe Reilly, Pat Verhoff,  
 ..... Rich Glynn, Jeffery McAllister, Mike O'Keefe  
 Photography ..... Michael Ryder  
 Lighting Crew ..... Joe Reilly, John Franzinni  
 Sound Crew ..... Bob McIlvaine, Marc Englander  
 Stage Crew ..... Craig Brennan, Lauren Bradbury, Rich Glynn, Dave Fordyce,  
 ..... Jeff Bernard, Joe Reilly, Josh Friedman  
 Flies ..... Rich Glynn, Dave Fordyce, Jeff Bernard, Dave Cote  
 Makeup & Hair ..... cast

Makeup Special Effects ..... Jon Fisher (chair), Paul Metzger  
 Poster Design ..... Maryann Haraldsen  
 Graphic Arts ..... Maryann Haraldsen, Mike Ryder, Paul Metzger  
 Program ..... Prill McGan (chair), Mike Ryder, Rich Glynn  
 Concessions ..... Bernadette Boardman  
 Lobby Design ..... Mike Ryder  
 Ushers ..... Ellie Morrill(chair), Catherine Andruskevich, Cheri and  
 ..... Craig Birch, Bernadette Boardman, Alene Bonner,  
 ..... Pam and Ron Bruckman, Janet Christie, Lorraine and  
 ..... Bill Cote, Chuck Emmons, Amy and Joshua Friedman,  
 ..... Norma French, Marie Hanley, Raelene Liljeberg,  
 ..... Terri O'Keefe, Anne Siglin, Cheryl Stocks, Cara Yara  
 Permits ..... Pam Bruckman  
 Subscriptions ..... Kerry Schneider  
 Webmaster ..... Jared Holland  
 Afterglow ..... Glen Grimard (chair)  
 Audition Board ..... Charles Emmons (chair), Paul Metzger, Julie Oliver-Babb,  
 ..... Martha Daniels Holland, Cheryl Stocks, Ann Siglin, David Fordyce  
 Audition Helpers ..... Val Levesque, Cheri Birch, Amy Friedman, Tommi Hall



**William A. Bilodeau, D.M.D., P.A.**

76 Northeastern Boulevard  
 Unit #27A  
 Nashua, New Hampshire 03062  
 Telephone: (603) 881-4022

Office Hours By Appointment

**Gianni's**  
**Pizza**

*Family Restaurant*

**19 Charron Avenue**

*(near airport)*

**883-8228**

Monday-Saturday  
 10 am to 11 pm  
 Sunday  
 11 am to 8 pm

Dine In, Take Out, Delivery





of Lawrence,  
Lowell and Salem, NH  
(800) 535-6322

Fire & Water  
Cleanup & Restoration™

“Like it never  
even happened”®



## Meet the Crew



**Barb Asketh (Properties Chairperson)** – Barb has been in community theatre for 25+ years and in Actorsingers for 12. After a 4-year hiatus to play the part of Louisa's mom, she's glad to be back in the thick of things. Barb welcomes her favorite apostle to the stage and thanks him for his love and support. She is looking forward to becoming a local girl and sharing her and Louisa's lives with Alan, Becky, and Mike. I love you guys!



**Rich Glynn (Co-Producer)** – Rich has been part of Actorsingers since 2001. He was cast in *Brigadoon* (2002) as Frank the Bartender and has not looked back since. He has been onstage in several shows, as well back stage, and has enjoyed each and every production. Having met a fantastic blend of people throughout his years of involvement, Rich is just amazed at the talent level of community theater in this area, especially this current cast of *JCS*.



**Glen Grimard (Co-Producer)** – Glen has produced three previous shows with Actorsingers: *Grease* (2001), *Two by Two* (2003), and *How To Succeed in Business Without Really Trying* (2004). Glen started with A/S by performing in *The Sound of Music* and *Pirates of Penzance*, but has since directed a number of shows. He lives in Lowell with his two black cats, and sings with the folk group at a weekly Sunday Catholic mass in a tiny church in that city.



**Sue Lewis (Costumes)** – Susan has worked with Billerica High School and her church's stage productions. *Titanic: The Musical* was her first costume effort with Actorsingers, and last spring she clothed the clans of *Brigadoon*. She enjoys singing and playing in a 5-octave hand-bell choir. She also directs two children's choirs.



**John McAllister (Technical Director)** – John has been involved with Actorsingers since 1976, both on and offstage, often with wife Linnea and son Geoffrey. Over the years, he has done lighting and set design for many A/S productions. Most recently, he designed the sets for *Man of La Mancha*, which was nominated for NH Theater Awards Best Set Design.



**Mike O'Keefe (Technical Director)** – For the past 4 years, Mike has been involved backstage for all Actorsingers adult and Junior productions. Mike has helped in a number of technical areas including sound design, stage management, set design and construction, and special effects. Recently, Mike stage managed the A/S award-winning production of *Ragtime*. Mike lives in Hudson with his wife and two children who are also involved with A/S.

(Continued on page 35)



## Serving Our Community – and Our Nation

For more than five decades, we have remained as committed to our surrounding communities as we are to building the world's most advanced defense electronics.

We are BAE Systems – New Hampshire's largest manufacturer, leader in high technology, and community partner.

We are proud to call New Hampshire home. And we're proud of the work we do to "Protect Those Who Protect Us."



**BAE SYSTEMS**

[www.iens.na.baesystems.com](http://www.iens.na.baesystems.com)

(Continued from page 33)



**Valerie Psoinos (Dance Assistant)** – Valerie has been a member of Actorsingers for 12 years. She began as a member of Junior A/S and has choreographed 10+ Junior and Teen A/S shows, as well as the past two senior class plays for Nashua High School. Valerie currently lives in Hudson and is going for her Masters in Education at Rivier College in Nashua. Valerie thanks Martha for letting her be involved with such a great production. It's been fun!



**Deb Ritrovato (Stage Manager)** – Deb is happy to be back as Stage Manager for another Actorsingers production. She has been with the group since 2000 and has been involved — mostly as a "techie" — in multiple shows, including Junior, Teen, and Adult productions. She is also glad to be doing the show with her husband and daughter, who are both in the cast. Love you much! PS: Miss you, Aaron.



**Dennis Schneider (Lighting Designer)** – Dennis is a Life Member of Actorsingers, having been part of the A/S backstage team since 1984. JCS is his 40th A/S show. Most recently, he designed the lighting for *Man of La Mancha*, *Ragtime*, and *Boomers*, as well as New England Academy of Music and Drama's award-winning production of *Wit*. Dennis has received four NH Theatre Awards for lighting and set design.



**Kerry Schneider (Publicity)** – Kerry is proud to be a Life Member of Actorsingers, having performed on and backstage for over 20 years! Most recently, Kerry was onstage in the Palace Theatre's *Footloose!* and in A/S productions of *Ragtime*, *Brigadoon*, and *Titanic*. She performs regularly with Stage One. Kerry is presently in rehearsal at the Palace for her upcoming role as Mama Rose in *Gypsy*.

### Special Thanks to . . .

**Preston Productions** for their generous technical support  
**HP Corporation** for their Matching Gifts Program  
 Paul Barham and Bryan Stewart of **Advanced Interactive Systems**  
 ([www.ais-sim.com](http://www.ais-sim.com)) for the loan of the surrogate weapons

and to . . .

Jed Holland  
 Gordon Mehlman  
 Dan Pelletier  
 Tony Taranto

Jon Crandall  
 Panera Bread  
 Domino's Pizza  
 Starbucks



1 Chelmsford Street  
 Chelmsford, MA 01824  
 Tel (978) 256-6575  
 Fax (978) 256-5060

**Susan Lewis**

Realtor

Jesus Christ Superstar Costumer  
 Multiple Centurion Award Recipient  
 V/M Pager (978) 250-3500 ext 123  
 Cell (978) 618-2704  
 E-Mail slewis@c21email.com

**Michael T. Meagher**

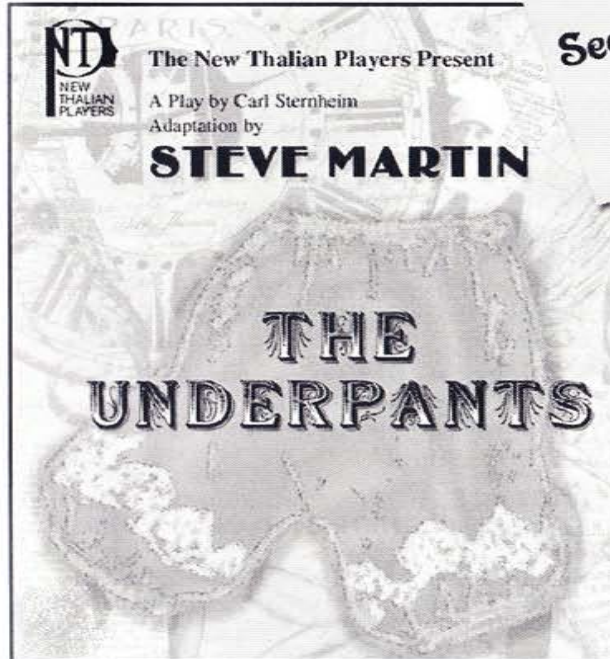
Realtor

Newest Century 21 Agent  
 Tel (978) 250-3500 ext 168  
 E-Mail mmeagher@c21email.com

**John Crandall**

Realtor/Broker

Multiple Award Recipient  
 Serving New Hampshire & Massachusetts  
 V/M (978) 250-3500 ext 109  
 E-Mail myharley21@aol.com



The New Thalian Players Present

A Play by Carl Sternheim  
 Adaptation by

**STEVE MARTIN**

**THE UNDERPANTS**

See the Original  
 Wardrobe  
 Malfunction!

May 6, 7 & 8

Friday & Saturday at 8pm  
 Sunday at 1pm

at the Bedford Olde Towne  
 Hall Theater on Meetinghouse Rd.  
 across from the library

**Tickets**

\$15 for Adults  
 \$12 for Seniors

Call for tickets: 603-666-6466  
 Reserve tickets by Email:  
 Tickets@NewThalianPlayers.org

**DEDICATED TO KELLY MANN**

Dear Friend & Beloved Mother & Daughter  
 You will always be in our

**HEARTS**

This show is for you! Love, Lizzie

\*\*\*\*\*



Shelly Latulippe, Director  
[www.RositaLee.com](http://www.RositaLee.com)

**Rosita Lee Dance Center**  
 222 Central St. Plaza, Hudson, NH 03051  
**(603) 883-0055**  
 Classes Offered in:  
 Creative Movement - Ballet - Tap - Jazz  
 Pointe - Lyrical - Hip-Hop  
 Ages Preschool thru Adult  
 Summer Program

\*\*\*\*\*

## Donations for Our Golden Anniversary 2004-2005

Because Community Theater cannot survive on ticket sales alone, we appreciate the following generous donations:

### Benefactors — \$250+

Roy & Kathy Badeau in honor of Betty Badeau	The McAllister Family Stephen Munyan
Bob & Bev Frasca	Dennis & Kerry Schneider
Jone D. LaBombard	Gordon & Barbara Webb

### Sponsors — \$150+

CZA	Dr. Linda-Jo Pettingell
William, Maureen, Mark & Lena Keller	

### Patrons — \$100+

Alene Bonner	Mr. & Mrs. John Lawrence
Anonymous	The Levine Family
Harvey & Stella Duchesneau	Don & Beulah O'Bryant
John & Anne Egan	Mike & Jen Ryder
The Glynn Family	Patrick Verhoff
William & Colleen Goleman	Deb Walz & Noelle Bourquard
Jared & Martha Holland	

### Angels — \$50+

Mrs. Francesca Bosowski	Ruth Kizala
The Cloughers	Ernest & Pat Kraut
Bill & Lorraine Cote	The Maloney Family
Stu & Sue Davidson	David B. Nelson
David & Jill Gidge	Rene Othot
Donald & Carol Gorelick	Paul & Maggie Schellenberg
Frank & Lorraine Graham	Mark Schwartzberg & Alexandra Kuftinec
Steve & Debbie Grass	B. Allan Sprague
Mr. & Mrs. Douglas W. Green	Dan & Karen Velasco
Bill & Tommi Hall	The Yara Family
The Ierardi Family	

### Friends — \$25+

Christina Adams	Crosby Bakery
Linda Annis	Mr. & Mrs. Robert Dion
Frank & Grace Bolen	Barry Doucette
Mr. & Mrs. Arthur E. Bonenfant	Web & Monica Dove
The Bossie Family	Albert & Sandra Dudley
Ann Butterfield & Diane Allen	Abe & Bea Emmer
Janet Christie	

(Continued on page 39)

(Continued from page 38)

Harold & Fran Fletcher  
A Friend  
The Fredericksen Family  
5 Friends  
Charles & Odette Friou  
Roger & Linda Gray  
Susan Hailson  
Rosemary Ippolito  
Butch & Peggy Kierstead  
Linda Walkley Kipnes  
The Kwan Family  
Karlene Lemieux  
Arlene Lyons  
Joan Marchie

Chris & Paula McWilliams  
Robert & Gail Morin  
Bill & Ellen Muller  
Ginny Nedved-Cook  
The Neth Family  
Charles & Ann Ott  
Natalie Pederzani  
The Petrain Family  
Stan & Therese Polan  
Tara Prarie  
Dr. John J. Pyne  
Jerry & Miriam Ryan  
The Sandler Family  
Mr. & Mrs. Lawrence Shea  
Mr. & Mrs. Gerald Simmons Jr.

### Gifts

Lillian Anderson  
Mr. & Mrs. Robert Blauth  
Phil & Joyce Cantore  
Richard & Gina Casale  
The Franzini/Angel Family  
The Harris Family  
Lee & Claudia Hauenstein

John & Eleanor Linton  
Lynn McCartney  
Dan Pelletier  
Mr. & Mrs. Roger Sidileau  
James St. Clair & Nancy Prentice  
The Stocks Family



Girls & Boys  
Under the Direction of  
Laurie Lacasse Lucier, BA.

# 883-6823

**We Offer a Positive, Fun & Educational  
Environment**

Ballet ▪ Tap ▪ Jazz ▪ Modern ▪ Pointe ▪ Hip-Hop

**Classes For All Ages & Abilities**

Ages: Preschool (Starting at 3) to Adult

*Registration for September Start June 13th*

142 Main Street, Nashua

# Blanchette, Jean & Company

Certified Public Accountants



The CPA. Never Underestimate the Value.<sup>SM</sup>

1440 Bridge Street  
Dracut, Massachusetts 01826

Come Check Out the New Menu At the

## Midfield Cafe

at the  
\*\*\* Nashua Airport \*\*\*



Celebrating Our 4-Year Anniversary

Serving Breakfast and Lunch Daily

From 7:00 am to 2:00 pm

*(Have a burger at 7:00 or an omelet at 2:00. We're easy.)*

*(Closed Tuesdays)*

Cash and Checks Accepted

*(Sorry, no credit cards)*

Limited delivery, catering, private functions,  
birthday parties, and takeout available.

***Congratulations to Actorsingers  
on your 50th anniversary in Nashua.***

***Have a super show!***

Bring in this ad and  
receive 1/2 off a regularly  
priced entree when you  
buy one entree of equal or  
greater value.

Located at  
83 Perimeter Road, Nashua, NH 03063  
603-594-0930 Sandra J. Adams



Steve & Sue Cooper  
Independent Contractors

**S & S Public Record Retrievers**

Phone: (603) 672-7179  
Fax: (603) 672-6005  
E-mail: SandSBusiness@ssrecordretrievers.com  
Web Site: www.ssrecordretrievers.com

Adobe PDF

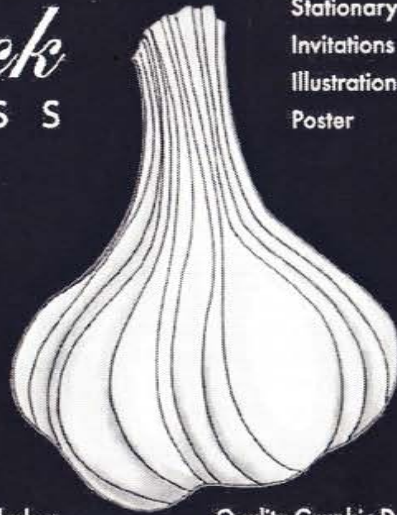


Attention Lawyers:  
If you need Electronic Copies of Your Courthouse Dockets,  
Come to us!  
We will create Electronic Copies of any  
Court Docket  
Onsite at the Courthouse.  
We can then send it to you  
Via E-mail or through a password protected Website.

We will retrieve Documents from:  
Any Court in  
Hillsborough County: i.e.  
Superior Courts,  
District Courts,  
Probate Courts  
&  
Registry of Deeds Records  
in  
Hillsborough County  
And  
Merrimack County



www.garlickpress.com



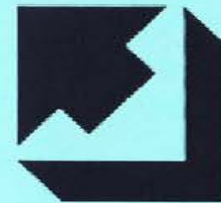
Odorless... Quality Graphic Design

Identity  
Website  
Stationary  
Invitations  
Illustration  
Poster

**Full Range of Accounting Services for all types of Businesses**

- Tax Planning & Preparation
- Financial Statements
- Management Advisory Services
- IRS Offer & Compromise
- Bankruptcy/Reorganizations
- Bookkeeping Services
- Payroll Preparation
- Business Valuations
- Litigation Support Services
- Loan Proposals and Forecasts
- Estate Planning
- Acquisitions

**888-1040**



Division for  
CPA Firms  
AICPA

**REDMAN & SAVOIE**

*Certified Public Accountants*

74 Northeastern Boulevard, Unit 18A Nashua, New Hampshire 03062